

Herefordshire Minerals and Waste Local Plan Publication Draft

Annex A



January 2021

Annex A

Figure 3 Minerals Sites, 2020

Figure 4 Waste Facilities, 2020

Figure 6 Key Diagram

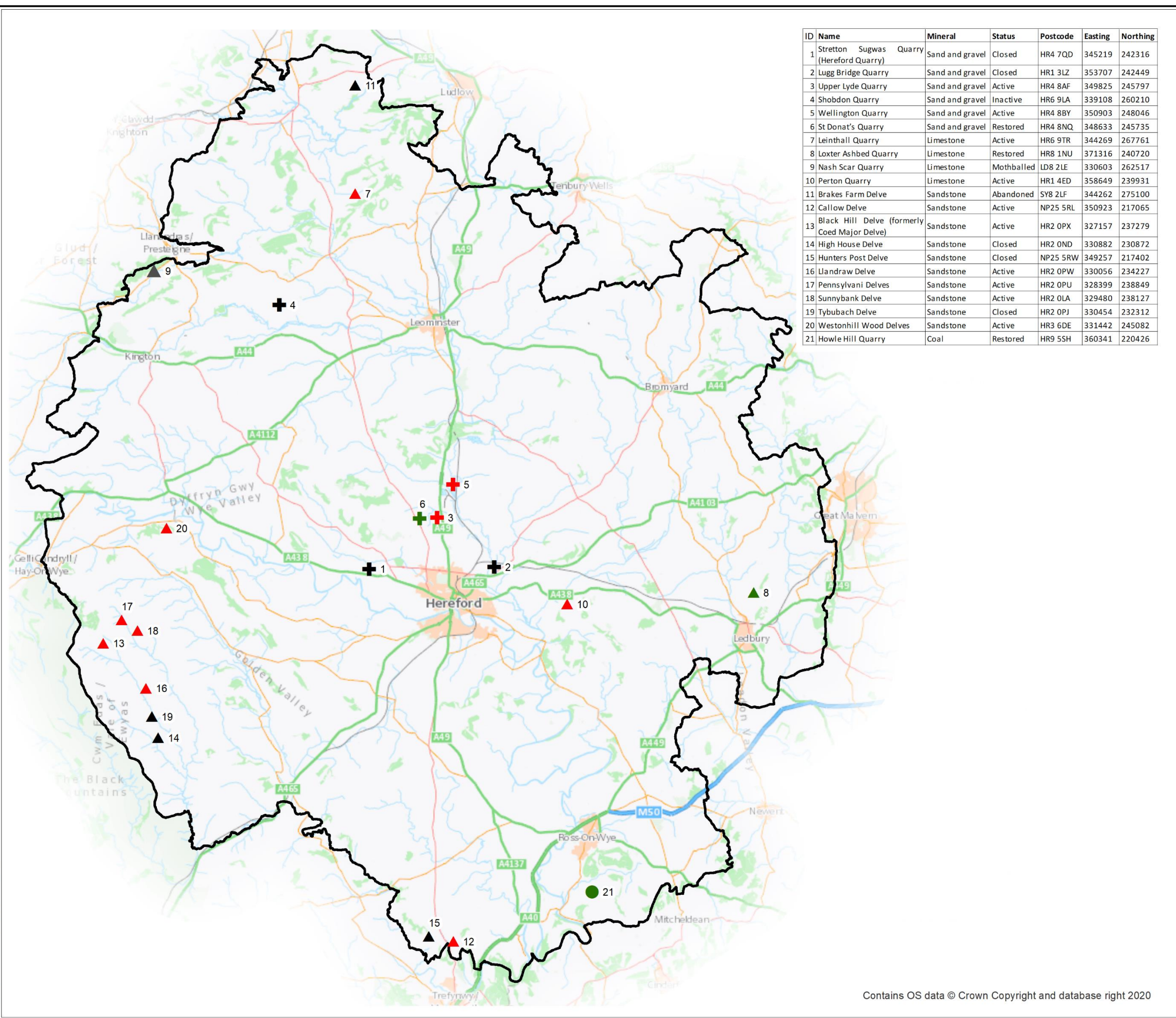
Figure 7 Minerals Safeguarded Areas including Rail Heads

The contents of this document are all designed to be printed at A3.

Herefordshire Minerals and Waste Local Plan

**Figure 3
Minerals Sites, 2020**

ID	Name	Mineral	Status	Postcode	Easting	Northing
1	Stretton Sugwas (Hereford Quarry)	Quarry	Sand and gravel	Closed	HR4 7QD	345219 242316
2	Lugg Bridge Quarry	Quarry	Sand and gravel	Closed	HR1 3LZ	353707 242449
3	Upper Lyde Quarry	Quarry	Sand and gravel	Active	HR4 8AF	349825 245797
4	Shobdon Quarry	Quarry	Sand and gravel	Inactive	HR6 9LA	339108 260210
5	Wellington Quarry	Quarry	Sand and gravel	Active	HR4 8BY	350903 248046
6	St Donat's Quarry	Quarry	Sand and gravel	Restored	HR4 8NQ	348633 245735
7	Leinthall Quarry	Quarry	Limestone	Active	HR6 9TR	344269 267761
8	Loxter Ashbed Quarry	Quarry	Limestone	Restored	HR8 1NU	371316 240720
9	Nash Scar Quarry	Quarry	Limestone	Mothballed	LD8 2LE	330603 262517
10	Perton Quarry	Quarry	Limestone	Active	HR1 4ED	358649 239931
11	Brakes Farm Delve	Delve	Sandstone	Abandoned	SY8 2LF	344262 275100
12	Callow Delve	Delve	Sandstone	Active	NP25 5RL	350923 217065
13	Black Hill Delve (formerly Coed Major Delve)	Delve	Sandstone	Active	HR2 0PX	327157 237279
14	High House Delve	Delve	Sandstone	Closed	HR2 0ND	330882 230872
15	Hunters Post Delve	Delve	Sandstone	Closed	NP25 5RW	349257 217402
16	Llandraw Delve	Delve	Sandstone	Active	HR2 0PW	330056 234227
17	Pennsylvania Delves	Delve	Sandstone	Active	HR2 0PU	328399 238849
18	Sunnybank Delve	Delve	Sandstone	Active	HR2 0LA	329480 238127
19	Tybubach Delve	Delve	Sandstone	Closed	HR2 0PJ	330454 232312
20	Westonhill Wood Delves	Delve	Sandstone	Active	HR3 6DE	331442 245082
21	Howle Hill Quarry	Quarry	Coal	Restored	HR9 5SH	360341 220426



Legend

Minerals Facilities

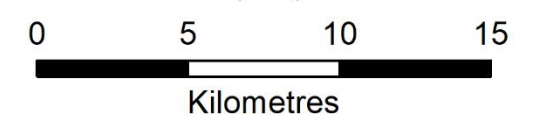
Type

- Coal
- ▲ Limestone
- + Sand and gravel
- ▲ Sandstone

Status

- Active
- Restored
- Uncertain
- Inactive/Closed

Herefordshire County Boundary



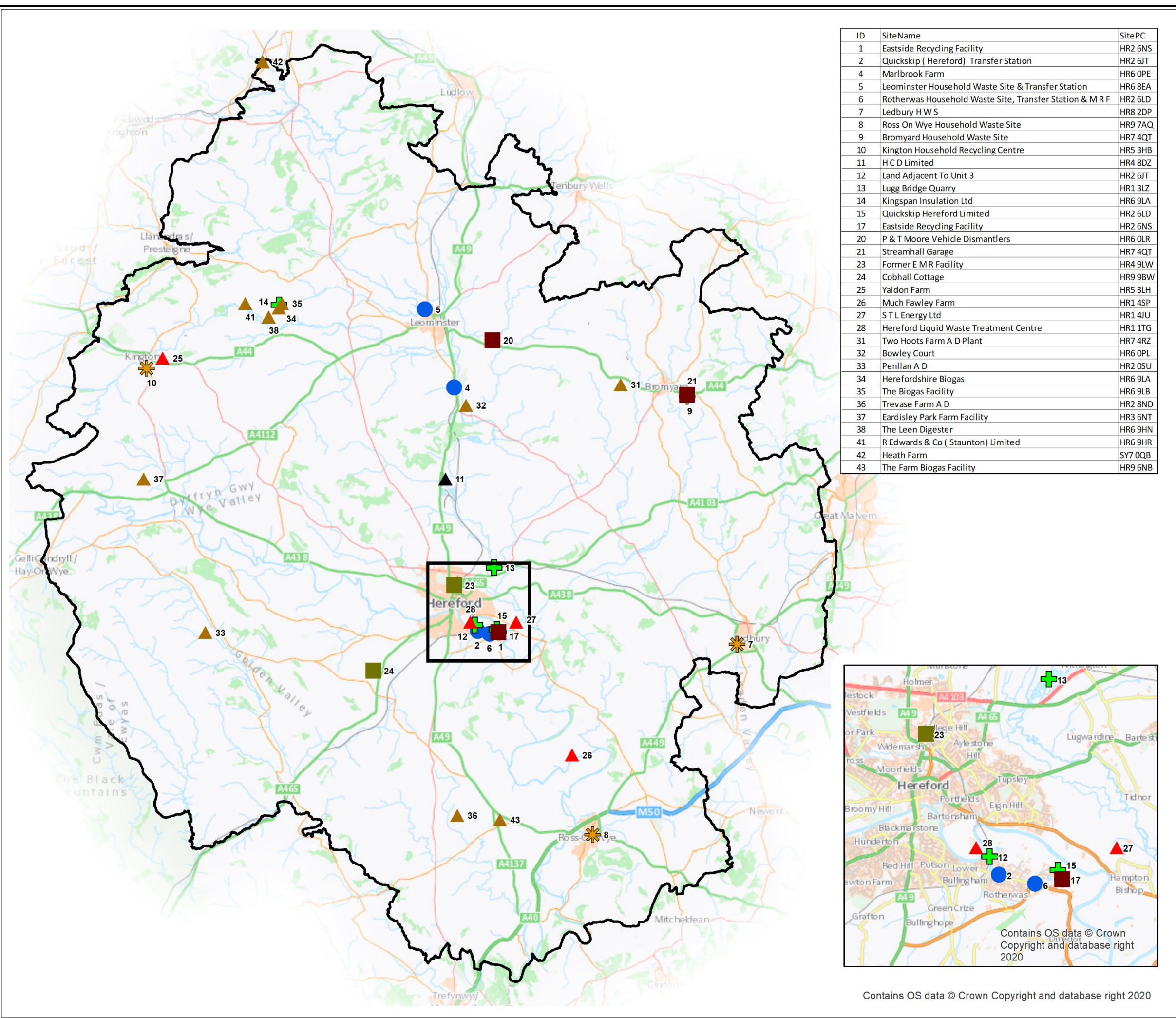
SCALE: 1:250,000 @ A3 DATE: 05/01/2021



Contains OS data © Crown Copyright and database right 2020

Herefordshire Minerals and Waste Local Plan

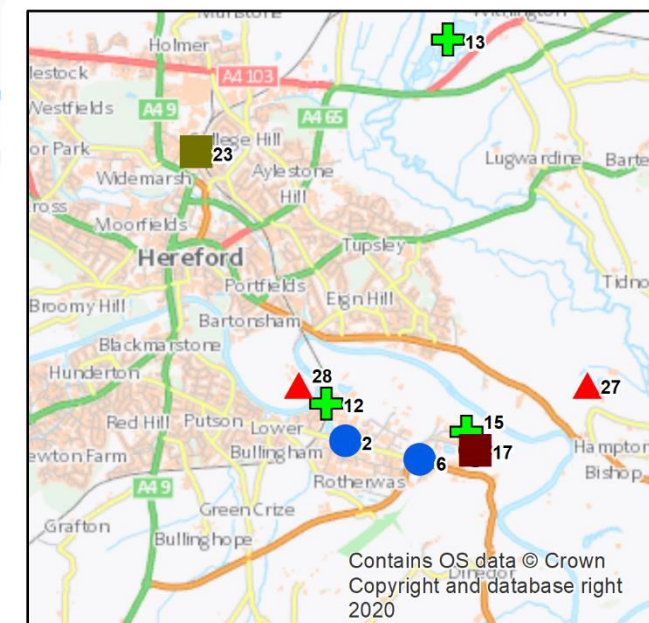
**Figure 4
Waste Facilities, 2020**



Legend

Waste Facility Type

- Anaerobic Digestion (Farm Waste)
- Biological Treatment
- CA Site
- Non-Haz Waste Transfer
- Non-Haz Waste Transfer / Treatment
- Physical Treatment
- Car Breaker
- Metal Recycling
- Haz Waste Transfer
- Material Recycling Facility
- Herefordshire County Boundary

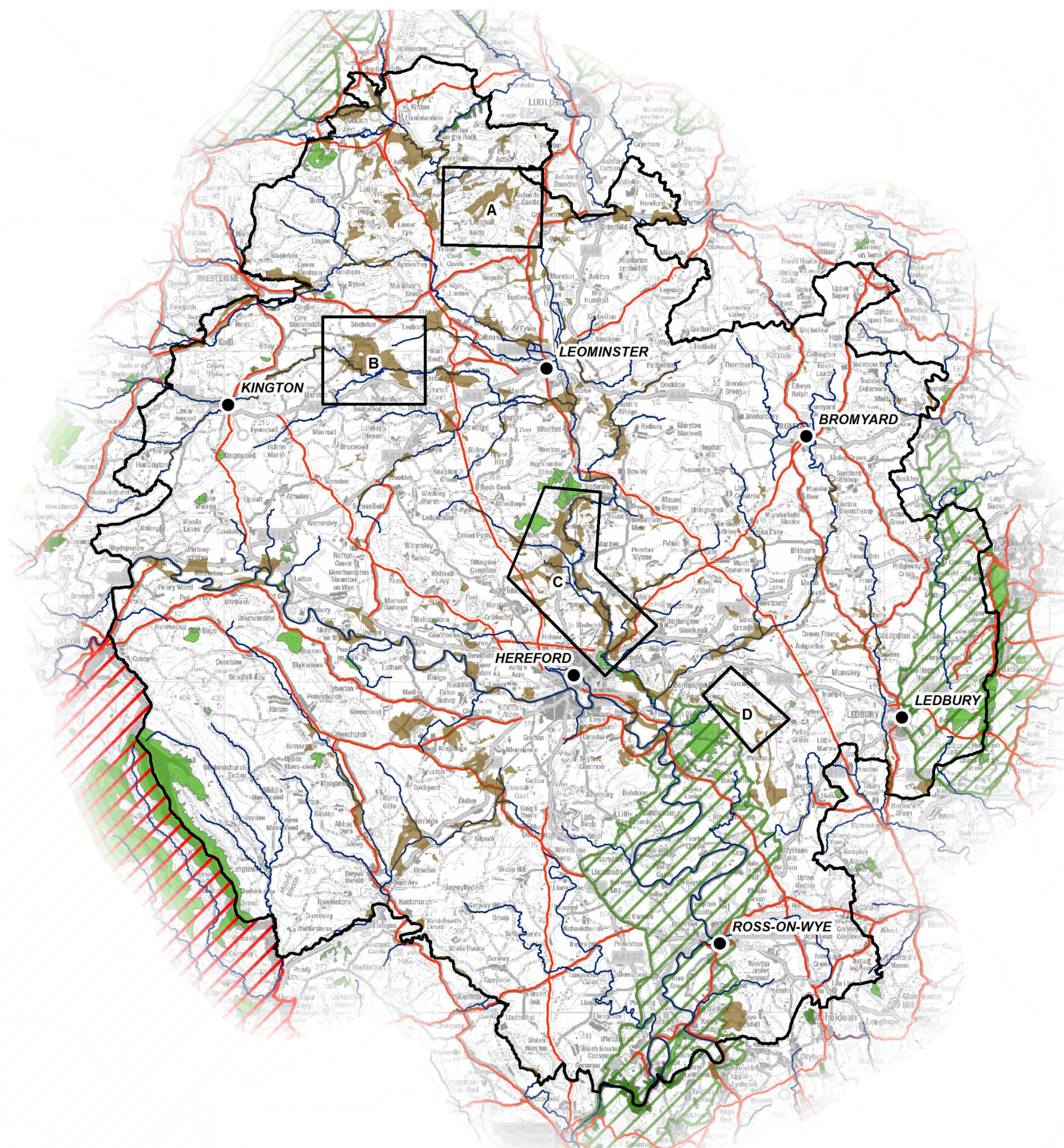


Contains OS data © Crown Copyright and database right 2020

SCALE 1:250,000 @ A3 DATE 05/01/2021

Herefordshire Minerals and Waste Local Plan

Figure 6 Key Diagram



- Brecon Beacons National Park
- AONB
- Natura2000 Sites
- UK Ecological Designations
- Preferred Search Areas
- General Search Areas
- Major Rivers
- Major Roads



Kilometres

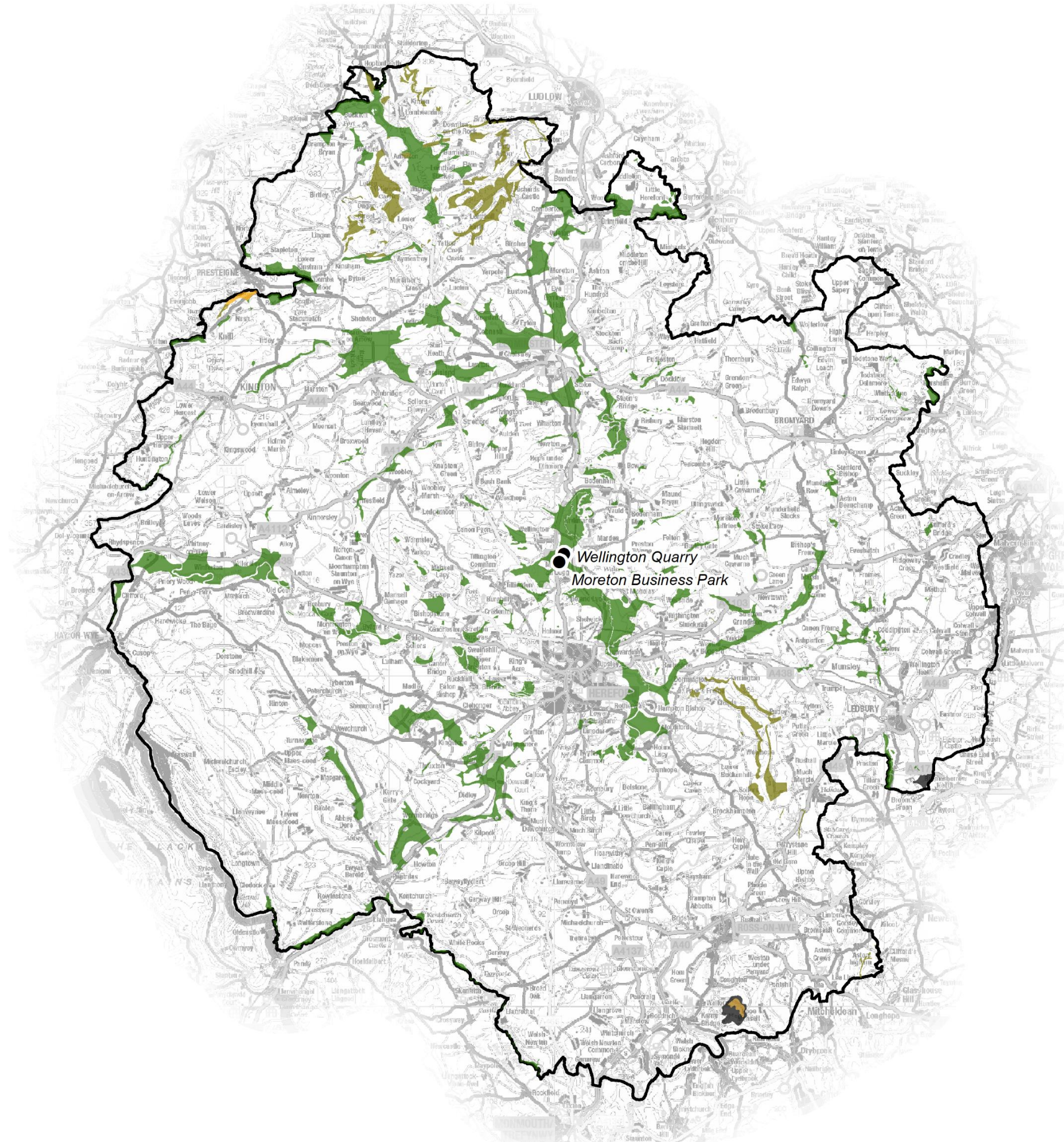
SCALE
1:260,000 @ A3

DATE
05/01/2021



Herefordshire Minerals and Waste Local Plan

Figure 7 Minerals Safeguarded Areas including Rail Heads



Mineral Reserves

-  Brick clay
-  Coal
-  Limestone (including dolomite)
-  Sandstone: Pre-Cambrian, Ordovician, Silurian Greywacke
-  Superficial sand/gravel
-  Rail Heads



SCALE
1:260,000 @ A3

DATE
05/01/2021

hendeca

